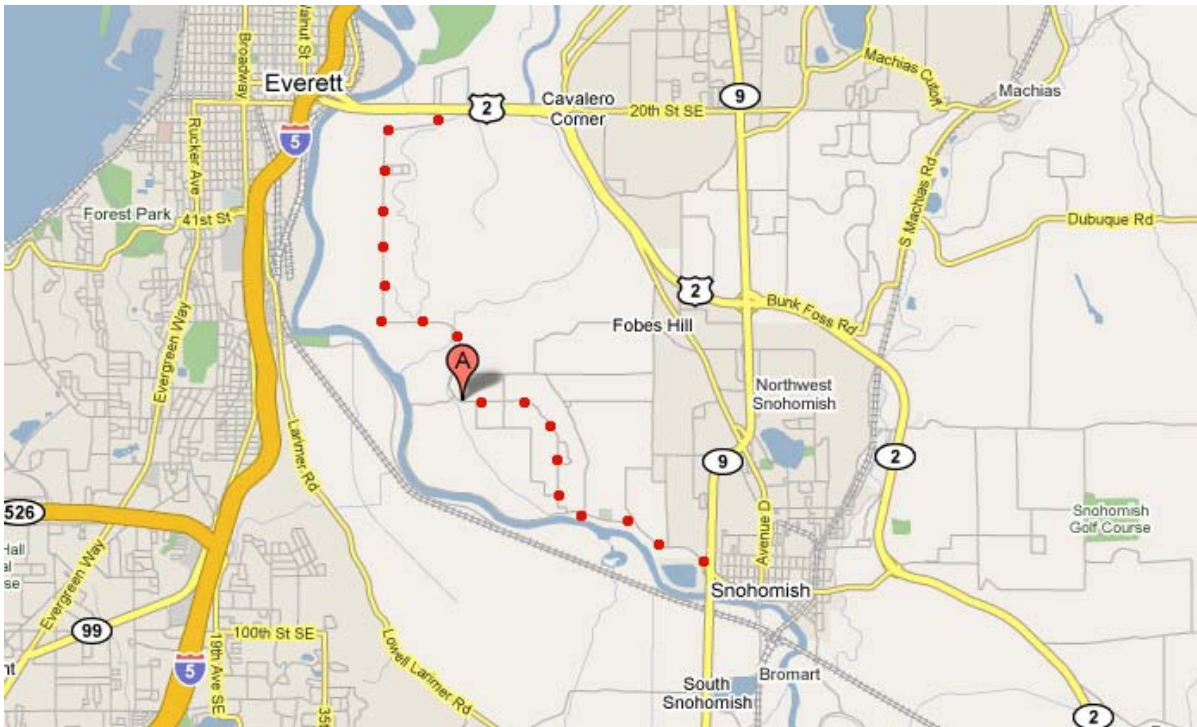


A Chapel on Swans Trail



**5419 - 64th ST SE, Snohomish, WA 98290
425-315-5623**

DIRECTIONS

I-5 North or South at Everett

Head **East on Highway 2** (trestle)
Take the **Ebey Island/ Homeacres Rd exit**
Head **South on Homeacres Rd for 4.2 miles**
Top of the hill on the left

Highway 9 Southbound

At **Frontier Village** head **West on 204** towards Everett
Take **Highway 2 West** exit onto trestle
Take the **Ebey Island/Homeacres Rd exit** and follow under the trestle
Turn **Left on Homeacres Rd for 4.2 miles**
Top of the hill on the left

Highway 9 Northbound

Take the **Snohomish Exit** (just North of Snohomish River overpass)
Head **West on 2nd St/ Riverview Rd. 1.5 miles**
Turn **R on 69th Ave SE** (then go straight. Do not turn on 78th)
The Chapel is 1.8 miles ahead
(go through stop sign at 61st Ave SE) down and up the hill.

Look for the Chapelnot the Farm